



Victory

LEISURE HOME
COLLECTION

2019



WELCOME

LUXURIOUS LEISURE HOMES CREATED WITH YOU IN MIND

Our 2019 collection combines brand new designs with popular favourites. The Echo and the Belmor remain popular, and come with a design refresh for the new season. Our two new models, Westpark and Atlantic will bring some new themes to the collection with their unique layouts and modern styles.

With 17 layouts across the 5 ranges, there is something for every taste and budget. Every leisure home we sell can also be customised with choices from our list of optional extras, ensuring everyone can find a Victory leisure home to meet their individual needs.

Please visit our website www.victoryleisurehomes.co.uk, where you can find much more information on all of our ranges, and take virtual tours of all of our models.

Thank you for picking up our brochure, and we hope to see you soon!

Peter T Nevitt
Managing Director



Page 4

WESTPARK

38 - 2 BED • 39 - 3 BED



Page 8

BELMOR

33 - 2 BED • 36 - 2 BED • 38 - 2 BED • 39 - 3 BED



Page 12

BELMOR CL

38 - 2 BED • 38 - 3 BED



Page 14

ECHO

28 - 2 BED • 33 - 2 BED • 36 - 2 BED • 36 - 3 BED • 38 - 2 BED



Page 18

ATLANTIC

28 - 2 BED • 32 - 2 BED • 36 - 2 BED • 38 - 3 BED

21

Customisation

22

Measurements

23

Construction

24

Two Year Warranty

24

Important Information

25

Lodge Collection





WESTPARK

HOME-FROM-HOME LUXURY

The extra-wide Westpark is our most luxurious leisure home yet. With classic features like free standing sofas, plush fabrics and anthracite window frames, it feels like a real home-from-home. Featuring fashionable yellows and greys, plus a range of technology as standard including an integrated dishwasher, built in Bluetooth sound system and our exclusive SoCozeeee mattress, the Westpark is also our most modern leisure home yet.

Plus, with an extended list of optional extras – including integrated washing machine – with the Westpark you really can have it all.



MAIN FEATURES

- Artefoam high performance external cladding
- Integrated 600mm dishwasher
- Bluetooth music system
- Externally vented cooker hood with light
- Coffee table
- Close-coupled ceramic toilet/s with dual flush
- Vaulted ceilings throughout
- Steel pantile peaked insulated roof
- Voile curtains to most windows
- Domestic gutters with rainwater fall pipes
- Galvanised corner steadies & tow bar with front and rear use
- Colour co-ordinated lounge scatter cushions
- TV point to master bedroom
- External light
- Free standing under counter fridge
- USB charging points to lounge & bedrooms
- LED lamps to most light fittings
- Bathroom fan
- Sliding patio door to front
- Feature window side panel to dinette area
- 6'3" beds in bedroom 2

POPULAR OPTIONAL EXTRAS

Lifestyle pack:

- ▶ Anthracite uPVC double glazing with Low-E glass
 - ▶ Combi boiler central heating with room thermostat control
 - ▶ Integrated fridge/freezer
 - ▶ Integrated microwave
- Environmental exterior with colour co-ordinated uPVC windows & doors
Fully galvanised or pre-galvanised chassis
Choice of external claddings in various colours
Integrated washing machine



LAYOUTS

For symbol key see page 23



▲ WESTPARK 38, 2 BEDROOMS (12' 6" WIDE)



▲ WESTPARK 39, 3 BEDROOMS (12' 6" WIDE)






BELMOR
 SPACIOUS LIVING, CLASSIC DESIGN

With a fresh new look for 2019, the Belmor is where open-plan living meets homely comfort. Our most spacious open-plan design to date features two entrances, including an outlook door as standard, and a floor space that naturally flows through the different areas.

The colours are inspired by modern greys and yellows, softened to create a classic timeless look. Plus, with a great list of standard and optional features – the Belmor provides a modern getaway with a touch of class.



MAIN FEATURES

- Outlook front doors (only on front lounge layouts)
- Modern electric fire
- Externally vented cooker hood with light
- Coffee table
- Close-coupled ceramic toilet/s with dual flush
- Vaulted ceilings throughout
- Steel pantile peaked insulated roof
- Voile curtains to most windows
- Domestic gutters with rainwater fall pipes
- Galvanised corner steadies & tow bar with front and rear use
- Colour co-ordinated lounge scatter cushions
- TV point to master bedroom
- External light
- Free standing under counter fridge
- USB charging points to lounge & bedrooms
- LED lamps to most light fittings
- Bathroom fan
- 6'3" beds in bedroom 2

POPULAR OPTIONAL EXTRAS

Lifestyle pack:

- ▶ uPVC double glazing with Low-E glass
- ▶ Combi boiler central heating with room thermostat control
- ▶ Integrated fridge/freezer
- ▶ Integrated microwave

- Environmental exterior with colour co-ordinated uPVC windows & doors
- Fully galvanised or pre-galvanised chassis
- Choice of external claddings in various colours



LAYOUTS

For symbol key see page 23



▲ BELMOR 33, 2 BEDROOMS



▲ BELMOR 36, 2 BEDROOMS



▲ BELMOR 38, 2 BEDROOMS



▲ BELMOR 39, 3 BEDROOMS



LAYOUTS

For symbol key see page 23



▲ BELMOR CL 38, 2 BEDROOMS



▲ BELMOR CL 38, 3 BEDROOMS



BELMOR
CENTRE LOUNGE

DESIGNED WITH FAMILIES IN MIND

Centre lounges are popular amongst families because they provide a perfect gathering space between the bedrooms which are at opposite ends of the layout, each with their own adjacent shower room.

The Belmor Centre Lounge retains the classy interior design, the flowing layout and the well-equipped specification of the front lounge model (please see page 9 for details).



ECHO

BRINGING THE OUTDOORS IN

The Echo features an open-plan layout that is spacious, whilst retaining the comfort of a semi-enclosed living area, where you can forget the kitchen, get cosy, and enjoy the panoramic view.

Combining cosy décor with a host of modern features as standard, including USB ports, coffee table and feature fireplace, the Echo also has a 38' layout that comes with a full size bath and separate shower, plus a comfy armchair in the lounge.

The Echo can also be easily upgraded to suit your needs, with a great list of additional options.



MAIN FEATURES

- Panoramic front aspect
- Generous lounge seating area
- Carpet underlay throughout
- Modern electric fire
- Externally vented cooker hood with light
- Coffee table
- Close-coupled ceramic toilet/s with dual flush
- Vaulted ceilings throughout
- Steel pantile peaked insulated roof
- Voile curtains to most windows
- Domestic gutters with rainwater fall pipes
- Galvanised corner steadies & tow bar with front and rear use
- TV point to master bedroom
- External light
- Free standing under counter fridge
- USB charging points to lounge & bedrooms
- LED lamps to most light fittings
- Bathroom fan
- 6'3" beds in bedroom 2
- Full size bath (38/2 only)
- Colour co-ordinated lounge scatter cushions

POPULAR OPTIONAL EXTRAS

Lifestyle pack:

- ▶ uPVC double glazing with Low-E glass
- ▶ Combi boiler central heating with room thermostat control
- ▶ Integrated fridge/freezer
- ▶ Integrated microwave

- Environmental exterior with colour co-ordinated uPVC windows & doors
- Fully galvanised or pre-galvanised chassis
- Choice of external claddings in various colours
- Outlook front doors
- Separate arm chair (standard on 38/2)



LAYOUTS

For symbol key see page 23



▲ ECHO 28, 2 BEDROOMS



▲ ECHO 33, 2 BEDROOMS



▲ ECHO 36, 2 BEDROOMS



▲ ECHO 36, 3 BEDROOMS



▲ ECHO 38, 2 BEDROOMS





ATLANTIC

GREAT VALUE, EXPERT QUALITY

The Atlantic has a price point to suit all budgets, whilst retaining the quality of an expertly produced Victory leisure home.

The practical interior is designed to last through the rough and tumble of the family holiday, whilst providing a comfortable and pleasant place to relax.

The open-plan layout offers the versatility to add optional outlook front doors, which take advantage of panoramic views. Plus, with a great list of other options we can create an Atlantic just for you.



MAIN FEATURES

- Generous seating area
- Fixed dinette seating area
- Coffee table
- Modern electric fire
- Close-coupled ceramic toilets with dual flush
- Vaulted ceilings throughout
- Steel pantile peaked insulated roof
- White domestic gutters with rainwater fall pipes
- Galvanised corner steadies & tow bar with front and rear use
- TV point in master bedroom
- External light
- Bathroom fan
- USB points to lounge & bedrooms
- 6'3" beds in bedroom 2

POPULAR OPTIONAL EXTRAS

Lifestyle pack:

- ▶ uPVC double glazing
- ▶ Combi boiler central heating with room thermostat control
- ▶ Integrated or free standing fridge/freezer
- ▶ Integrated microwave

- Fully galvanised or pre-galvanised chassis
- Lounge pull out sofa bed
- Environmental green external cladding with windows to match
- Additional insulation pack to floor
- Outlook front doors



LAYOUTS

For symbol key see page 23



▲ ATLANTIC 28, 2 BEDROOMS



▲ ATLANTIC 32, 2 BEDROOMS



▲ ATLANTIC 36, 2 BEDROOMS



▲ ATLANTIC 38, 3 BEDROOMS

CUSTOMISATION

OPTIMISE YOUR MODEL WITH OPTIONAL EXTRAS

With Victory you don't just get a stylish, great value leisure home, you can also personalise any of our models to create a leisure home that really is unique to you. Before you decide on your optional extras though, make sure you know the standard specification of your chosen model, as some options may be included already. Our optional extras available include:

- ▶ Combi boiler central heating with thermostat control
- ▶ uPVC double glazing with Low-E glass
- ▶ Outlook front doors
- ▶ Choice of external claddings & matching windows
- ▶ Winter additional floor insulation (Atlantic range only)
- ▶ Fully galvanised chassis
- ▶ Pre-galvanised chassis
- ▶ Integrated fridge/freezer
- ▶ Integrated microwave
- ▶ Integrated dishwasher*
- ▶ Integrated washing machine*
- ▶ Lounge scatter cushions (Atlantic range only)
- ▶ SoCozeeee Mattresses (Atlantic range only)
- ▶ Bedding sets
- ▶ Space saving fold-under bed to any twin bedroom**
- ▶ Armchair (Echo range only, standard on Echo 38)

*Not available in some models where layout does not allow.
 **Not in conjunction with the SoCozeeee mattress.



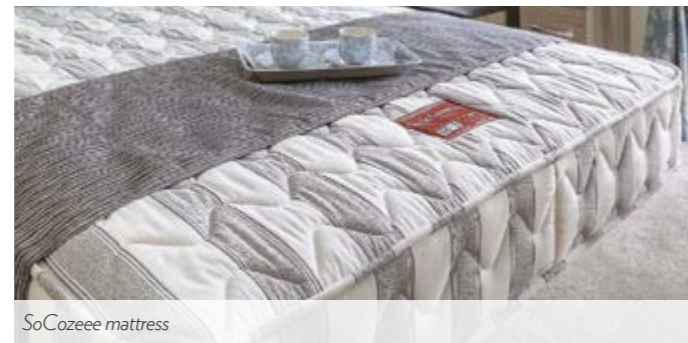
External cladding (shown on the Westpark)



Fully galvanised chassis & insulation



USB ports as standard (shown in the Westpark)



SoCozeeee mattress



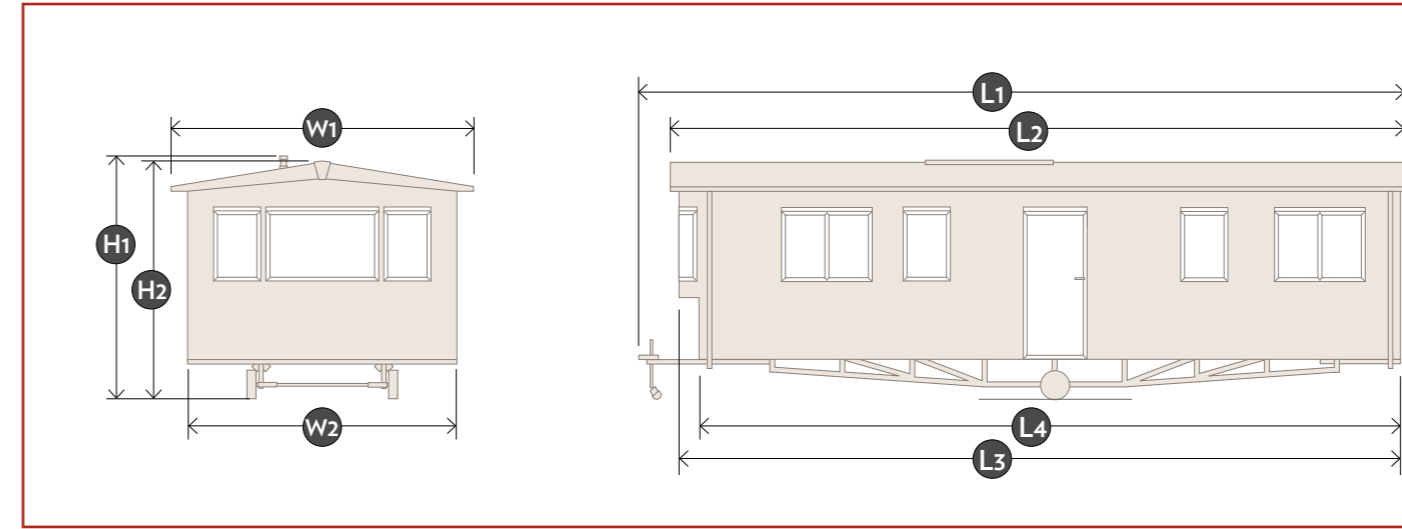
Armchair (optional on Echo only)



Integrated fridge/freezer



Central heating thermostat



MEASUREMENTS

BECAUSE THE DETAILS MATTER

Before purchasing your Victory leisure home, we are sure you will want to know the exact measurements. The models are listed here in the order they appear in the brochure

MODEL	BEDROOMS	METRIC (METRES)							IMPERIAL (FEET & INCHES)						
		L1	L2	L3	L4	W1	W2	H1/H2	L1	L2	L3	L4	W1	W2	H1/H2
WESTPARK 38	2	12.96	12.31	N/A	11.82	4.18	3.88	3.64	42'6"	40'5"	N/A	38'9"	13'9"	12'9"	11'11"
WESTPARK 39	3	13.36	12.71	N/A	12.22	4.18	3.88	3.64	43'10"	41'8"	N/A	40'1"	13'9"	12'9"	11'11"
BELMOR 33	2	11.52	10.93	10.51	10.33	4.05	3.68	3.59	37'10"	35'10"	34'6"	33'11"	13'3"	12'1"	11'9"
BELMOR 36	2	12.43	11.84	11.42	11.24	4.05	3.68	3.59	40'9"	38'10"	37'6"	36'11"	13'3"	12'1"	11'9"
BELMOR 38	2	13.06	12.47	12.05	11.87	4.05	3.68	3.59	42'10"	40'11"	39'6"	38'11"	13'3"	12'1"	11'9"
BELMOR 39	3	13.36	12.77	12.35	12.17	4.05	3.68	3.59	43'10"	41'11"	40'6"	39'11"	13'3"	12'1"	11'9"
BELMOR CL 38	2	13.06	12.32	N/A	11.87	4.05	3.68	3.59	42'10"	40'5"	N/A	38'11"	13'3"	12'1"	11'9"
BELMOR CL 38	3	13.06	12.32	N/A	11.87	4.05	3.68	3.59	42'10"	40'5"	N/A	38'11"	13'3"	12'1"	11'9"
ECHO 28	2	10.02	9.28	N/A	8.83	4.05	3.68	3.59	32'10"	30'5"	N/A	29"	13'3"	12'1"	11'9"
ECHO 33	2	11.52	10.78	N/A	10.33	4.05	3.68	3.59	37'10"	35'4"	N/A	33'11"	13'3"	12'1"	11'9"
ECHO 36	2	12.43	11.69	N/A	11.24	4.05	3.68	3.59	40'9"	38'4"	N/A	36'11"	13'3"	12'1"	11'9"
ECHO 36	3	12.43	11.69	N/A	11.24	4.05	3.68	3.59	40'9"	38'4"	N/A	36'11"	13'3"	12'1"	11'9"
ECHO 38	2	13.06	12.32	N/A	11.87	4.05	3.68	3.59	42'10"	40'5"	N/A	38'11"	13'3"	12'1"	11'9"
ATLANTIC 28	2	10.02	9.28	N/A	8.83	4.05	3.68	3.59	32'10"	30'5"	N/A	29"	13'3"	12'1"	11'9"
ATLANTIC 32	2	11.22	10.48	N/A	10.03	4.05	3.68	3.59	36'10"	34'5"	N/A	32'11"	13'3"	12'1"	11'9"
ATLANTIC 36	2	12.43	11.69	N/A	11.24	4.05	3.68	3.59	40'9"	38'4"	N/A	36'11"	13'3"	12'1"	11'9"
ATLANTIC 38	3	13.06	12.32	N/A	11.87	4.05	3.68	3.59	42'10"	40'5"	N/A	38'11"	13'3"	12'1"	11'9"

All dimensions are shown in metres (m) and imperial (feet / inches). All measurements are approximate and rounded to the nearest mm or inch. They could vary slightly due to the nature of the materials used, although the variance should not be significant. Please note that the floorplans throughout the brochure are indicative of the general layout only. They are not to scale and do not represent fully the shape and style of furniture and fittings or the detail of content.



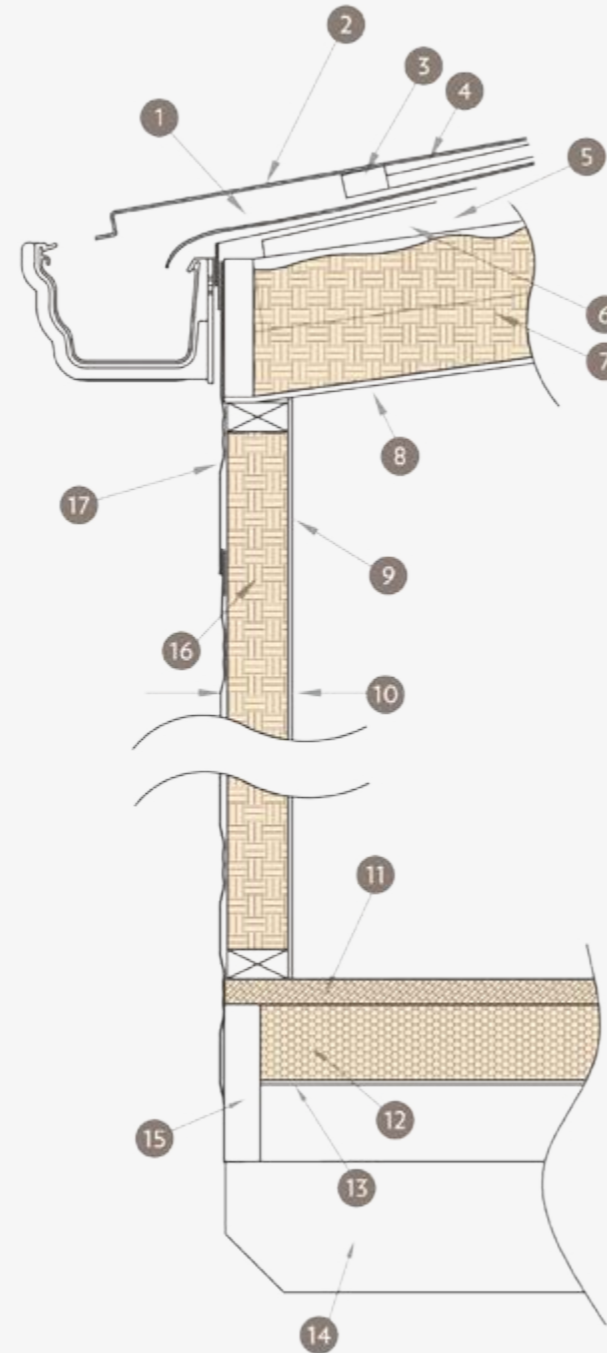
CONSTRUCTION

METICULOUSLY BUILT TO THE HIGHEST STANDARDS

All of our models are built by our skilled craftspeople at our modern, purpose built facility in Gilberdyke, East Yorkshire. At our 8,000 square foot energy efficient factory, we produce more than 1,000 units every year for families all over the UK, Europe and beyond.

- 1 4mm ABA Single Bubble Laminated Reflective Foil Membrane Insulation
- 2 Steel Pan Tile Roof Sheets
- 3 Timber Rock Laths
- 4 25mm Average Air Gap
- 5 Timber Pre-Fabricated Roof Trusses
- 6 100mm Average Air Gap
- 7 100mm Glass Mineral Wool Insulation
- 8 4mm Vinyl Laminated Hardboard
- 9 3.4mm Vinyl Laminated Decorative Wallboards
- 10 47mm Wall Thickness (Excluding Cladding)
- 11 18mm V313 Flooring Grade Chipboard
- 12 50mm Expanded Polystyrene Insulation*
- 13 5mm Plywood*
- 14 Steel Chassis
- 15 105mm x 25mm Timber Joist*
- 16 44mm Glass Mineral Wool Insulation
- 17 Aluminium, Plastic or Timber Log Cladding

*Not standard on Atlantic range, which has 96mm x 25mm Timber Joists with 10mm Natural Fibre Insulation Board



SYMBOLS

FLOORPLAN GUIDE

Key to the symbols used on the floorplans throughout this brochure.

- Entrance
- Electric Fire
- Gas Boiler
- Extractor
- Optional Fridge/Freezer
- Optional Microwave
- Dishwasher
- Shower
- Bath
- Master Bedroom
- Bedroom 2
- Bedroom 3
- Wardrobe

TWO YEAR WARRANTY

PEACE OF MIND WHEN BUYING YOUR LEISURE HOME

The combination of solid construction and evolutionary design, integrated with comfort and function, demonstrates the depth of knowledge and experience that the management and staff at Victory Leisure Homes have gained over many years working in the leisure home industry.

This underpinning gives us the confidence to offer a two year warranty to all purchasers in the UK (subject to certain terms and conditions).

The full warranty is available online at www.victoryleisurehomes.co.uk, or you can ask for a printed copy by sending a stamped and addressed envelope to the address on the back page.

For purchasers outside of the UK, please refer to your supplier for warranty details.

The warranty available is additional to and does not affect your statutory rights under consumer legislation.



Our production facility in East Yorkshire

IMPORTANT INFORMATION

THINGS TO KNOW WHEN BUYING A LEISURE HOME

In order for any Victory leisure home to be used, it needs to be correctly sited, have steps or other means of entry and be connected to services (an appropriate propane gas supply, mains electricity to suit the required wattage off-take, mains water at a pressure to suit the appliances and a waste water/sewage outlet).

Most models can be powered by mains electricity only, although some layout changes will be necessary. Victory recommends that you do not use the product for residential occupancy. All Victory leisure homes are built to comply with many European and British Standards and all relevant codes of practice required by the National Caravan Council Certification Scheme and those endorsed by The British Holiday and Home Parks Association. These include the recommendation that caravan holiday homes should only be used for temporary holiday occupancy.

The sizes given are reasonably accurate shell measurements, but if your chosen pitch has size limitations or obstructions, you should consult with your park operator or dealer to establish specific sizes.

Illustrations, photographs, descriptions, information and statements contained in any Victory Leisure Homes Ltd literature are intended only as a general guide. They are relevant to the product at the time of writing and production. Victory Leisure Homes Ltd reserves the right to change any materials, fittings, sizes etc. at any time and without prior notice as supply, product development or legislation conditions demand. The matching and lining-up of patterns on wall-boards and fabrics is not always possible because of the caravan design and methods of construction.

Some of the items photographed (some refrigerators, fridge/freezers, microwaves, televisions, media players, some soft furnishings for beds and general props) are for illustration purposes only. Please refer to your park or dealer if you need clarification.

All Victory leisure homes are built to meet the requirements of EN1647 for snow loading categories A & B provided that the caravan is sited as recommended in the relevant code of practice for siting.

Please note: the description given for some features is not always applicable to every model within any range as there may be legal, technical or layout requirements that may create the need to alter or leave out the stated feature. Also, any item pictured may be different in size or style in other models within the range. Please be aware that supplied appliances and fittings may vary from those described as manufacturers may change, update or make obsolete and introduce new models. Such changes are beyond our control and we draw your attention to the fact that we reserve the right to change as these supply implications take effect. If any feature is critical to your purchasing decision, it would be wise to check beforehand exactly what is supplied with your chosen model.

THE LODGE COLLECTION

BY VICTORY LEISURE HOMES

At Victory our philosophy is based on a real desire to provide best quality lodges at affordable prices, backed up with a high standard of service.

Our 2019 Collection consists of 13 lodges with a choice of 16ft or 20ft widths. Each model has been given a style update, plus we introduce our brand new flagship model, the Cézanne.

Our lodges are stylish, practical and comfortable, with elegant natural tones accented by the latest trends in colour combinations. Plus, with an extensive list of appliances and features, a Victory lodge is a truly luxurious choice.

CÉZANNE

42 x 20 - 2 BED

MONACO DUO

40 x 20 - 2 BED • 41 x 20 - 3 BED

PARKVIEW

36 x 20 - 2 BED • 40 x 20 - 2 BED • 40 x 20 - 2 BED CL
41 x 20 - 3 BED • 46 x 20 - 4 BED

BEECHWOOD

40 x 16 - 2 BED • 40 x 16 - 3 BED • 29 x 20 - 2 BED
40 x 20 - 2 BED • 41 x 20 - 2 BED





Victory Leisure Homes Ltd.
Broad Lane | Gilberdyke | East Yorkshire | HU15 2TS

01430 471 200
www.victoryleisurehomes.co.uk
sales@victoryleisurehomes.co.uk

